

# Willamette Water Supply

*Our Reliable Water Future*

## Heads Up! Gerda Lane Closure Coming Soon

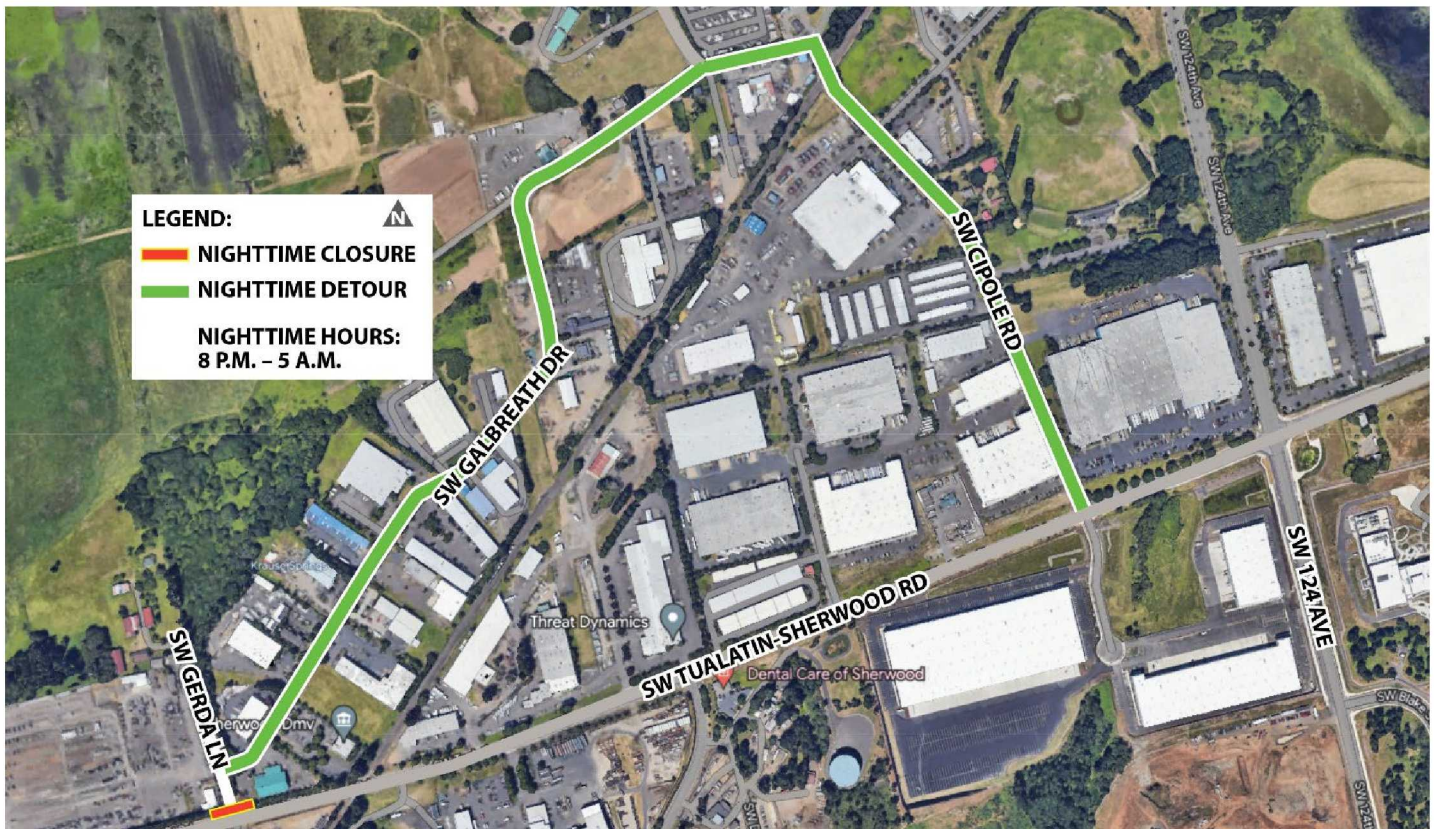
**July 8 to July 22**

SW Gerda Lane will be closed during nighttime hours from 8:00 p.m. on Monday, July 8, through 5:00 a.m. on Monday, July 22.

The nighttime closure will be between the hours of 8:00 p.m. and 5:00 a.m. for 14 days. Gerda Lane will be open during daytime hours. Traffic will be detoured onto SW Galbreath Drive and SW Cipole Road. Please follow the detour route.

The road closure is needed to install the Willamette Water Supply Pipeline along Tualatin Sherwood Road.

Thank you for your patience. Please drive carefully.



### Learn More:

Willamette Water Supply Program  
503-941-4570

[info@ourreliablewater.org](mailto:info@ourreliablewater.org)

[www.OurReliableWater.org](http://www.OurReliableWater.org)

### After Hours Contact During Gerda Lane Closure:

Justin Johnson, Emery & Sons, 503-551-0778

### Construction Updates:

[www.ourreliablewater.org/tualatin-sherwood-area-pipeline-project](http://www.ourreliablewater.org/tualatin-sherwood-area-pipeline-project)